



Industry Case Study

# Rice Mill



## Case Studies:

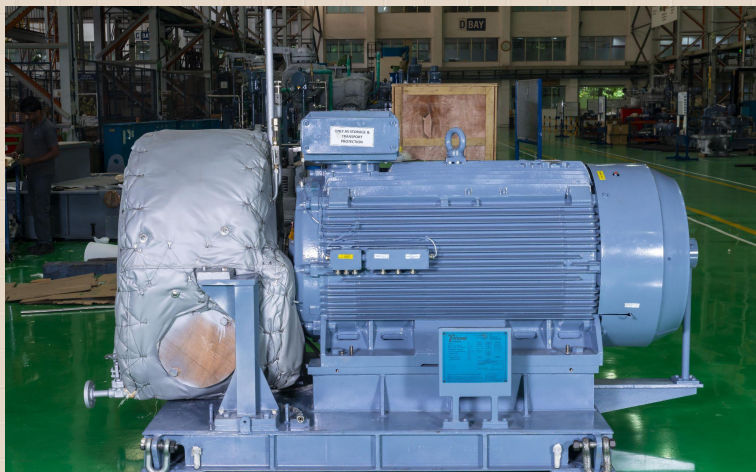
500 KW SMART Turbine Installed in  
Kangayam, Tamilnadu



## Challenges

- PROCESS BOILER OPERATING WITH SATURATED STEAM – 21 Bar / Saturated
- Steam of 12 TPH Is required to process
- Delivery demanded less than 8 months
- Fluctuating Load every one hour based on process demand
- Load Variation from 4 to 12 TPH depending on availability of Raw Material
- Daily Start & Stop of Turbine
- Exhaust pressure – 5 kg/Cm<sup>2</sup>

## Triveni Solutions



- Triveni Team visited the site and assessed the space identified for the Turbine Installation
- Triveni's SMART Offering of 500 kW Steam Turbine benefitted customer with over 40 Lakh units of Green Power
- As the steam inlet is very low pressure and saturated, a steam separator is installed at the inlet line to prevent the carryover of wet steam into the turbine, thereby increasing the lifecycle of the turbine
- The offered turbine was with remote start and stop facility
- SMART Unit was delivered and commissioned within 6 months
- ROI was less than 8 months
- The design was optimized to meet both customer budget and space availability

**Thank you.**

